

County Councillors' Rhigos Report- March

Streetcare

Black bag collection for Hirwaun, Penderyn and Rhigos will be **Friday 20th March**.

Reported flytipping:

Furniture at several locations along Parish Road

With Parish Road, we have asked when the Council will consider permanent cameras. With the access roads being in RCT, we could catch vehicle registrations and drivers.

Put in requests for litter picks:

Many locations within Rhigos

Both sides of the A465 road between Rhigos roundabout to the Welcome to Neath Port Talbot sign.

A road sweep has been requested for the main roads of Rhigos following the cutting back of hedges.

Moss has been reported again on the lane from Cwrt Twyn Rhyd and along Heol Esgyn.

Highways

The Statutory Notice period for 22 of the 26 roads finished on February 13th, before progressing to reverting back to 30mph. Residents and Stakeholders were able to submit formal objections or representations. The next stage:

- Delegated Key Decision Report with recommendation to proceed with reversion
- Objectors notified of the Council's decision
- Works to begin on site as soon as possible

Regarding the de-trunk section [A4059], the project remains at the preliminary design stage. Detailed design work for the new access road has not yet been undertaken, and the specifics of the underpass are still to be developed as RCT await further information from WG. Officers from the Parks team have been informed of the access road proposals and contributed to early discussions when FVC were involved in the initial design. Their continued input will be essential as the design progresses to ensure any impacts are minimised.

Following a vehicle collision on Heol-y-Graig with a fence, RCT have responded- "A new section has been replaced, like for like, in the same position that it was prior to the collision. I did note whilst on site however, that it appears to have been damaged at the bottom, I will arrange for this to be repaired."

Reported potholes:

Heol Pendarren Heol Esgyn Cwrt Twyn Rhyd
Mount Road Rhigos Road

Highways Officer- "I have attended to inspect mount road and can confirm the poor condition, Albeit surface course erosion that is still within our safety defect criteria. I have added it to the list for consideration of resurfacing... I can confirm that the pothole outside number 1 Heol Esgyn has recently been repaired along with the 12 other defects that were marked up and issued for repair.

With regard to the standard of work, Heol Esgyn is in a poor state of repair and any repair carried out within its surface is not going to look great because of its current condition.”

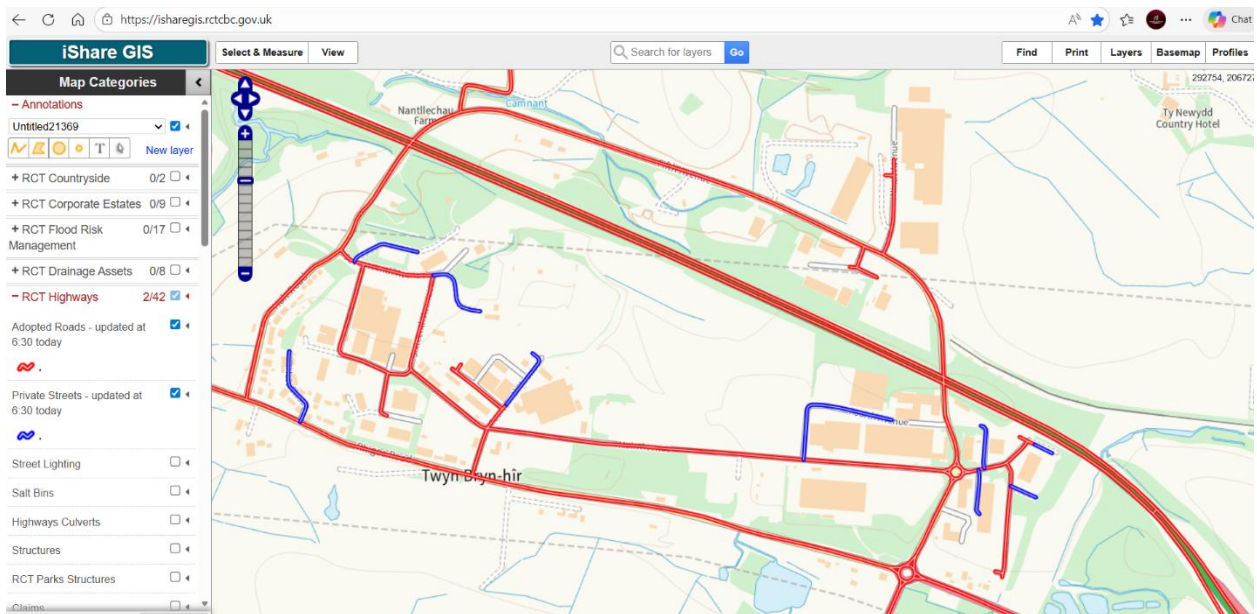
Reported the condition of the green panels adjacent to the shop, opposite Min Afon.

Highways Officer- “I have called the gang to remove the fallen fence panels once again to make safe. Highways has not received any response from the land owners and the only action we can take from a maintenance perspective is to remove the loose/unstable sections that may cause a danger to the highway user.”

Shared concerns with the pavements and roads on the Industrial Estate.

Highways Officer- “I am aware that the overall condition of the Highways at this location are in poor condition but they are inspected on a three monthly basis and all actionable defects outside of our safety defect criteria are picked up and actioned accordingly during those inspections.

For your information I have placed 5th Ave, 16th Ave, 17th Ave and Main Avenue along with various footpaths on the list for consideration of resurfacing within the capital program.”



Red= RCT responsibility Blue= Private responsibility

Trees/Overgrowth

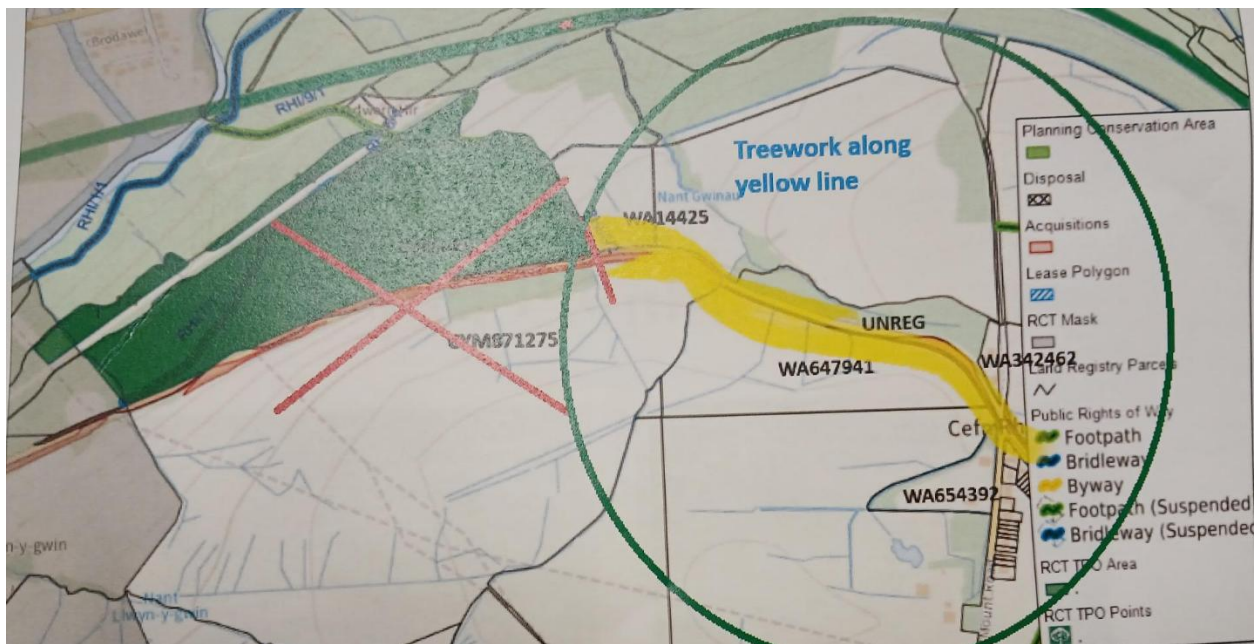
Reported trees between Tower and Maes Glas, the old toll house, they need cutting.

The trees reported on the Old Glynneath Bank will be assessed by RCT’s Arboricultural Surveyor who will be checking the area in due course and any remedial tree work needed will be scheduled in.

With further concerns shared about the safety of the trees on the Old Glynneath Bank, an officer responded:

“Our surveyor has assessed the trees along the full length of the old Glynneath embankment, and we are aware of the work required. This has been added to our schedule and will be completed as soon as possible. Please see the attached plan, which outlines the area where the Council will be undertaking the necessary works. I will advise the tree officer of your update regarding the uprooted tree.

The **highlighted area** will be completed by the Council. The **TPO area and the land opposite** fall within **private ownership**, and the relevant landowners have been contacted through our enforcement process case#95 +#96. Any land **west of the TPO boundary** is the responsibility of the adjoining local authority.”



Flooding/Drainage

Rainwater gullies at Rhigos Primary School have been requested for clearance.

Reported blocked drains:

Old Glynneath Bank

Shared concerns to RCT with the communication contractors digging up the side of the road from Glynneath to Rhigos. They have been digging up the chippings that were to help the drainage. A lot of mess was made on the grass verge too.

RCT will be reviewing if they can improve the current fencing in place along Rhigos Road following the drainage works there e.g. tension of the wires. The fencing which has been installed was the original fence in place onsite. The contractor will be returning to install gabion baskets adjacent to the two access tracks to provide support to the banking when clearance works are undertaken. Additionally, two CCTV telemetry poles will be installed to monitor debris build up, condition etc. This can be seen

on many of our culverts throughout the County, aiding us to monitor flows throughout spells of adverse weather.

RCT Council

Questions to Cabinet:

1. "Pavements should be safe in our county for residents to use. Wherever possible, a vehicle should not cover the pavement obstructing busy junctions or forcing residents to go on to the road. Does the Cabinet agree that more needs to be done on this issue for the safety of residents?"
2. "The high cost of temporary road closures can act as a barrier to community events and street parties taking place. Can the relevant Cabinet Member share the costs that a small community group would need to pay for a temporary road closure of an hour please?"